



MEDIT

The easy entry into
digital dentistry

Medit *i500*



straumanngroup
Digital Solutions





Introduction

Our latest product, the Medit *i*500 intraoral scanner, exemplifies three qualities:

Value, Efficiency, and Productivity

Together, these three qualities make it easy to incorporate our scanner into your workflow. Designed with quality in mind, we created the Medit *i*500 to add value to your practice.

With its impressive speed and powderless system, the *i*500 allows for a smoother scanning experience, shortening turnaround times and increasing the productivity of your clinic.

Regardless of your specialization, the *i*500 has diverse applications, ensuring that your professional needs are met. Increase your work efficiency with the vast flexibility that the open CAD/CAM system offers and never worry about compatibility issues again.

Make the transition today and enjoy the Medit experience.

Medit i500



High ROI

We created the Medit i500 scanner with a high Return On Investment in mind. The design and software allow for an unparalleled performance at a very competitive price.



Flexibility

The Medit i500 uses an open CAD/CAM system, allowing you to export STL files out of Medit Link and share it with your preferred lab, or to easily transfer files and track your progress throughout the entire workflow.



Impressive Speed

Using two high-speed cameras, the Medit i500 scans quickly and efficiently. With its intelligent scan detecting algorithm, the i500 picks up where it left off for a smooth scanning experience.



Powderless

The Medit i500 does not require the use of powder for regular cases, making the scanning process more seamless and the experience more pleasant for the patient.



Small Tip

The small tip on the Medit i500 is beneficial to both the user and the patient through simpler maneuverability and improved patient comfort.



High Resolution

The Medit i500 produces realistic images which are high in resolution and rich in detail, allowing you to distinguish between tooth structure and soft tissue for easy identification of margin lines and undercuts.



Accuracy

	In vitro*		In vivo**
	Trueness	Precision	
Single	5.3µm ± 0.34	3.2µm ± 0.49	10µm
Quadrant	17.3µm ± 0.43	6.3µm ± 0.63	25µm
Full arch	21.0µm ± 1.48	22.6µm ± 7.55	50µm

* Accuracy test in vitro was conducted by Yonsei University College of Dentistry according to the methods in "Accuracy comparison analysis on scan data of single tooth, quadrant, and full arch between two types of intraoral scanner, i500 and Trios 3" Ji-Man Park, 19 December 2018.

** Accuracy test in vivo was conducted by Medit.



Video Type

There is no need to worry about choppy results with the Medit i500 as it takes rapid video-based scans, capturing more data in a short period of time. The resulting image taken by the dual cameras is hence smoother and more detailed.



Lightweight

Scanning can be uncomfortable and tiring, especially if you're using a heavy scanner. But we have eliminated that problem with the Medit i500 scanner which is light in weight and easy to hold, making the process a comfortable one for you.



Vivid Color

The Medit i500 scanner produces precise-colored scans which can distinguish between soft tissue, plaque and teeth.

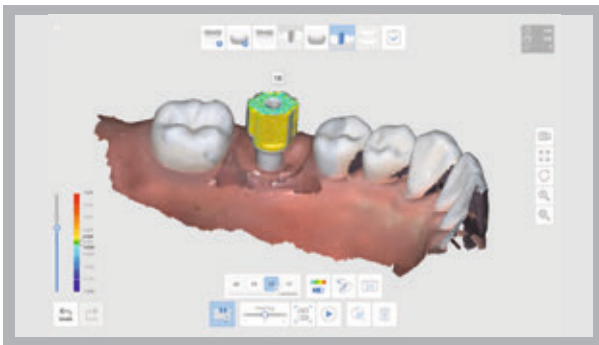


Single Button Control

The single button of the Medit i500 allows the user to start and stop the scan at any moment without having to reach for the computer. Press the button down once to start scanning, and another time to stop. When the scan is complete, hold it down to move to the next scanning stage.

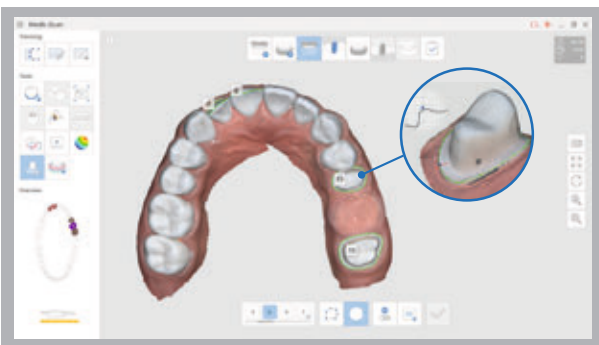


Medit iScan



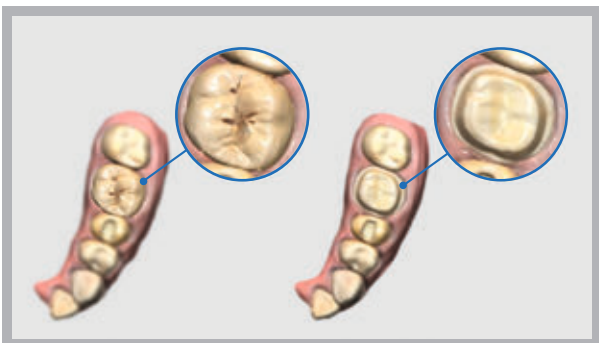
A.I. Abutment & Scanbody Matching

This function allows you to match scan abutments and scan bodies, thus saving time in instances of poor scanning environments. You can select the appropriate library for your tooth. When you scan the corresponding tooth, the scan abutment and scan body are automatically matched and aligned with the scan data. The aligned library data can be used for downstream work such as design. A manual alignment option is also available.



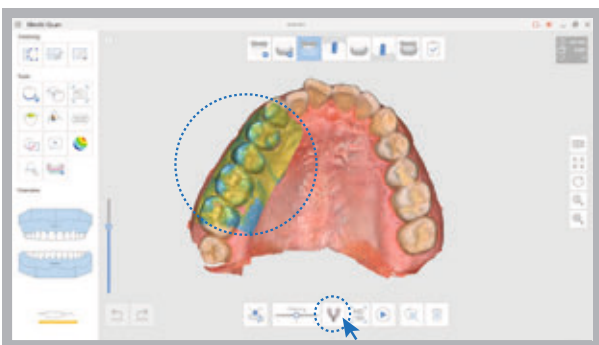
Margin Line Creation

iScan features automatic and manual margin line creation as well as edit functions. While scanning a patient, you can add or edit control points to the prepped teeth scan data in order to draw the most accurate margin line. The created margin lines will be forwarded for more accurate prosthesis design and production along with your order.



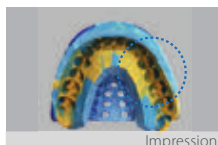
Pre-Operation Scan

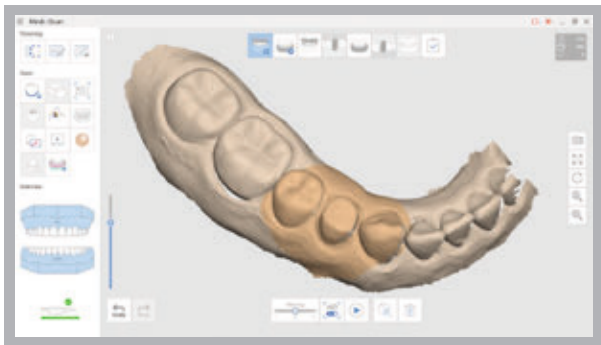
You can perform a pre-operation scan of a patient's teeth and utilize this data for a variety of uses. With this pre-operation scan data, the post-operation scan can be performed more quickly and easily. The data can also be used as reference data in the modeling process to assist you in creating more natural prosthesis.



Impression Scan

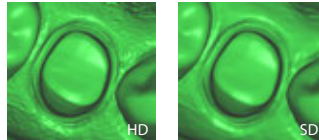
This function supports composite scanning operations which use both embossed oral scan data and engraved impression scan data. With just a simple scan, both data can be sorted and merged in real-time and used for modeling.





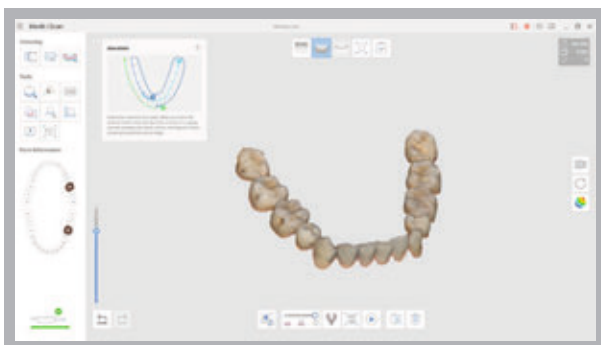
High Resolution Scan

You can select specific parts of the tooth to scan at high resolution. This function allows you to scan in HD only where it is required, enabling efficient management of scan time, data capacity etc. The selected area is displayed in a different color for ease of use.



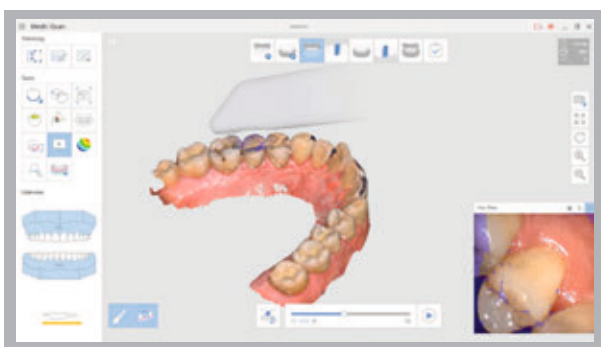
Face Scan

You can perform a face scan with the *i500* and align it with imported data such as 3D face scan data taken with other facial scanners or 3D bone data which has been converted from DICOM files taken via CT.



Smart Scan Filtering

This feature helps to remove unnecessary soft tissue data which is one of the biggest challenges when performing scans. The three filter options allow you to choose the amount of soft tissue you wish to capture in your scan data.



Scan Replay

The scan replay function allows you to replay a previous scan process. By virtually showing the scan tip and scan area, you will be able to see how it was scanned, enabling you to identify and improve your scanning methods or habits.

Medit Link

Medit Link is a workflow management and communication software designed to enhance your performance. Its integrated cloud storage and open data architecture ensure that your clinic's performance is optimized. You can also manage your workflow in real-time and communicate via the platform.



One Software
to connect them all
www.meditlink.com



Dashboard



Analytics



Cloud Storage



Communication



Payment

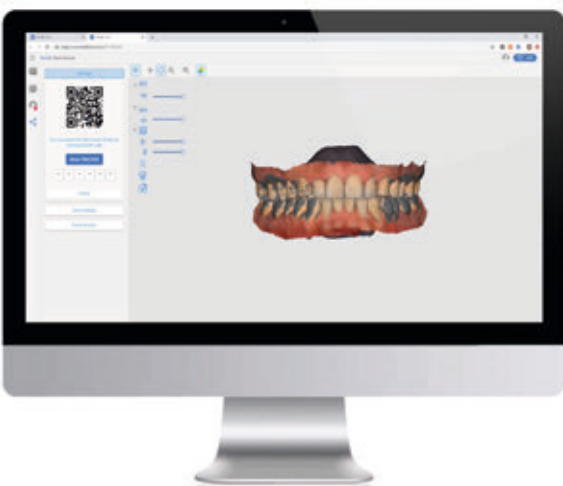


Cloud Storage & Scan Data Synchronization

Medit Link is coupled with cloud storage for all digital scan files, therefore requiring less space than physical copies. The real cloud system allows you to work on your original scans, easily archive your digital impressions and orders, as well as manage your cases wherever you are. In addition, partners can easily make adjustments to the working files as required.

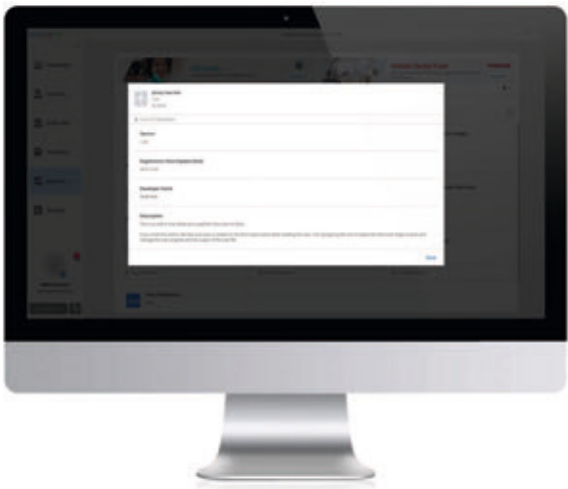
Dashboard

With the Medit Link Dashboard you can view scan and order status, cloud usage, data storage space, and calibration intervals in real time, as well as keep track of daily scans as represented on a graph. The function allows you to easily manage the performance of your business and communicate effectively for more efficient operations.



Web Viewer & Case Talk

The Web Viewer allows you to view and adjust scan data on your PC or mobile screen, as well as capture images and add notes. You can also create public links to your 3D data to share with your partners, allowing you to communicate in real-time while looking at the same screen. In addition, with Case Talk, you can communicate with your patients for better patient care and higher quality results.



App Box

The App Box provides users with a variety of workflow options by allowing you to search for and install extensions available in Medit Link. This includes additional features provided by Medit as well as integrated software options by our partners.

Workflow Management

Medit Link allows tracking of workflows from order to delivery, and can even be linked to CAD/CAM software to improve work efficiency. Medit Link was created to help you manage your workflow in the easiest and most effective way possible, saving you valuable time.

Payment Management

Medit Link's billing management system automatically stores and manages your invoice to help you focus on the more important tasks. When you make payment for the first time, the payment information will be safely encrypted and stored in the server. This enables you to make future orders easily with just one click.



Download Medit Link at
www.meditlink.com

The easy entry into digital dentistry



reddot award 2019
winner



Specification

Category	Description
Tip size	19 x 15.2 mm (WxH)
Overall handpiece length	266 mm
Weight	280g
Imaging technology	3D-in-motion video technology
Color	3D full color streaming capture
Connectivity	USB 3.0
Scanning area	14 x 13 mm

About Medit

Medit is a global provider of 3D measurement and CAD/CAM solutions for dental clinics and labs, including intraoral scanners, based on its own patented state-of-the-art technology. The company also develops platform solutions for digital dentistry, supporting collaborative workflows. Additionally, the Solutionix line provides 3D scanners and software to the industrial market. The company's goal is to provide innovative technology and the highest quality products to ensure mutual growth for all partners.

Medit is headquartered in Seoul, South Korea since its inception in 2000. The company also has representatives located in the Americas and Europe, and boasts a global network of distributors in over 70 countries.



Distributor: International Headquarters
Institut Straumann AG
Peter Merian-Weg 12
CH-4002 Basel, Switzerland
www.straumann.com

www.medit.com